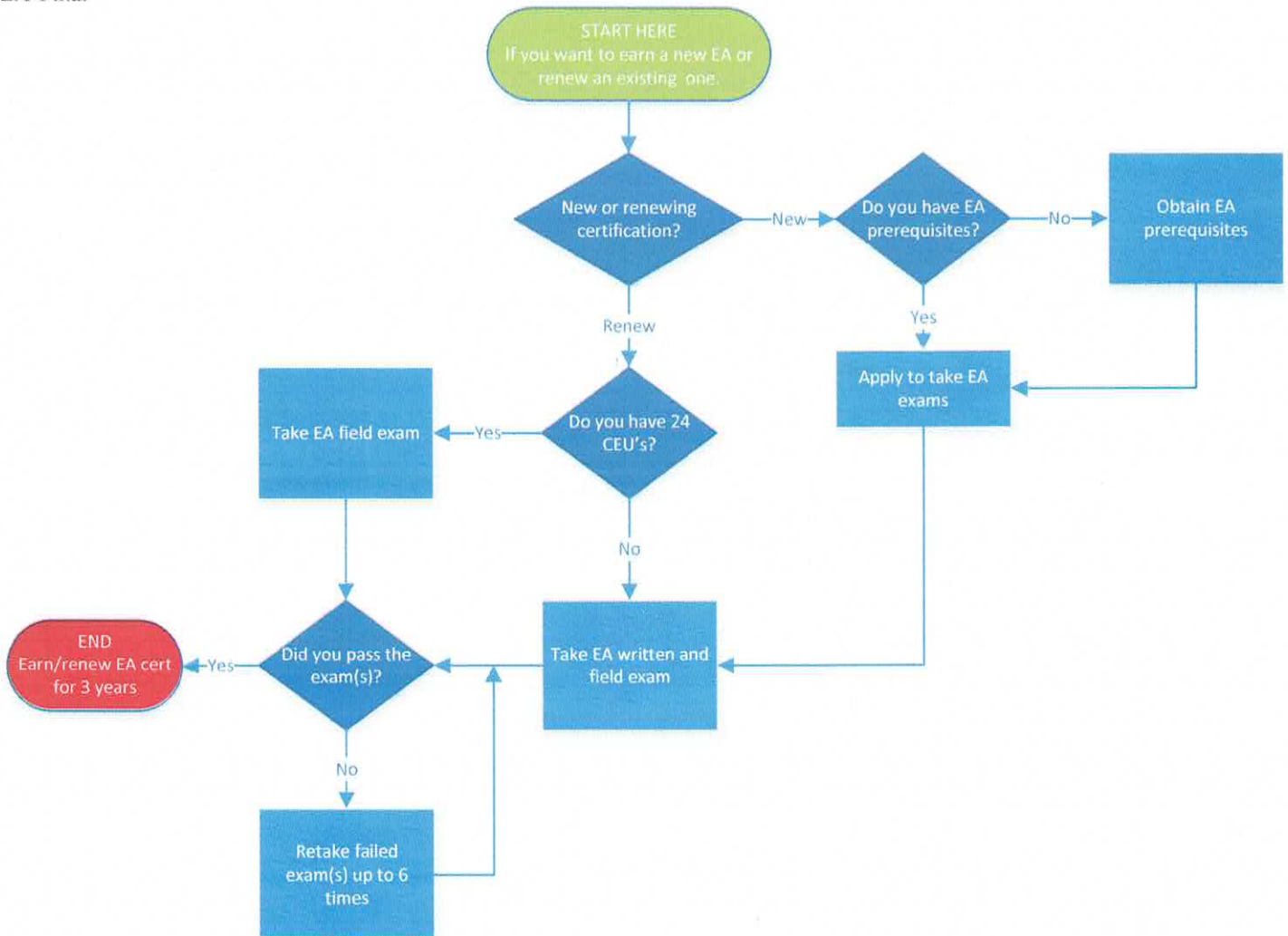


HEP Energy Auditor: New and Renewing Certification Candidates

When does this apply: March 1, 2019 and beyond

Flowchart Reference:

EA-Final



EA Prerequisites

Experience: Minimum 1,000 hours from:

- Field/technical position within the home performance or related field, OR
- Performing audits in a building science trade

Energy Modeling:

- 10 energy models that comply with BPI 1100-2.2 (with proof) OR
- Successfully completed energy modeling training (with proof)

Additional Requirements:

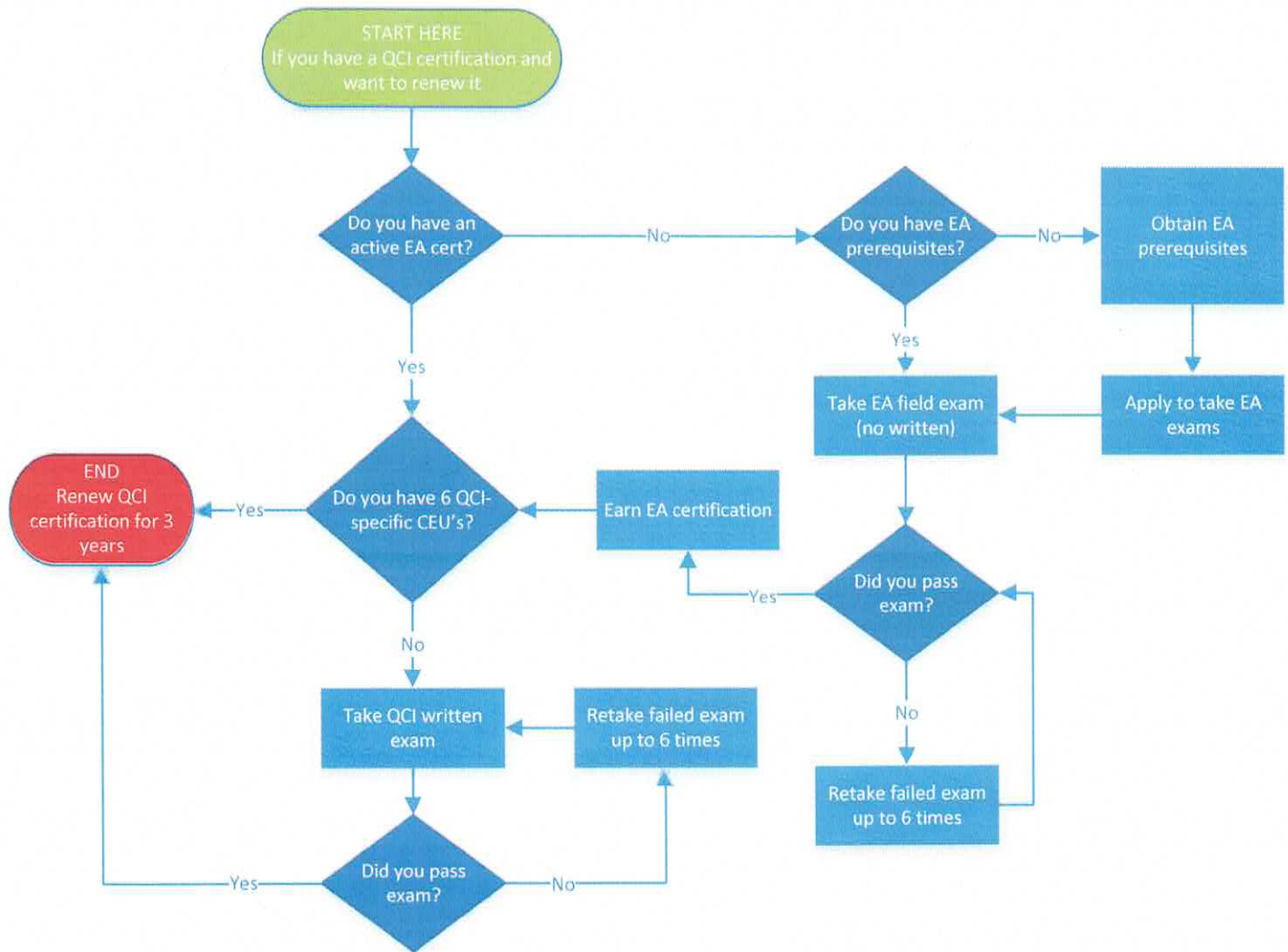
20 points from any combination of the following:

- Building trades experience: Max 10 pts, 5 pts for each 1000 hrs
- Training from industry-specific training center: Max 10 pts, 5 pts for each 40 hrs
- Related industry certifications: (e.g., RESNET, BPI, NATE, EPA, others). Max 10 pts, 5 pts per certification

HEP Quality Control Inspector: Renewing Certification Candidates

When does this apply: March 1, 2019 and beyond
(when renewing from the old scheme)

Flowchart Reference:
QCI-Renew-Final



Renewing QCI Prerequisite

Active EA certification

OR

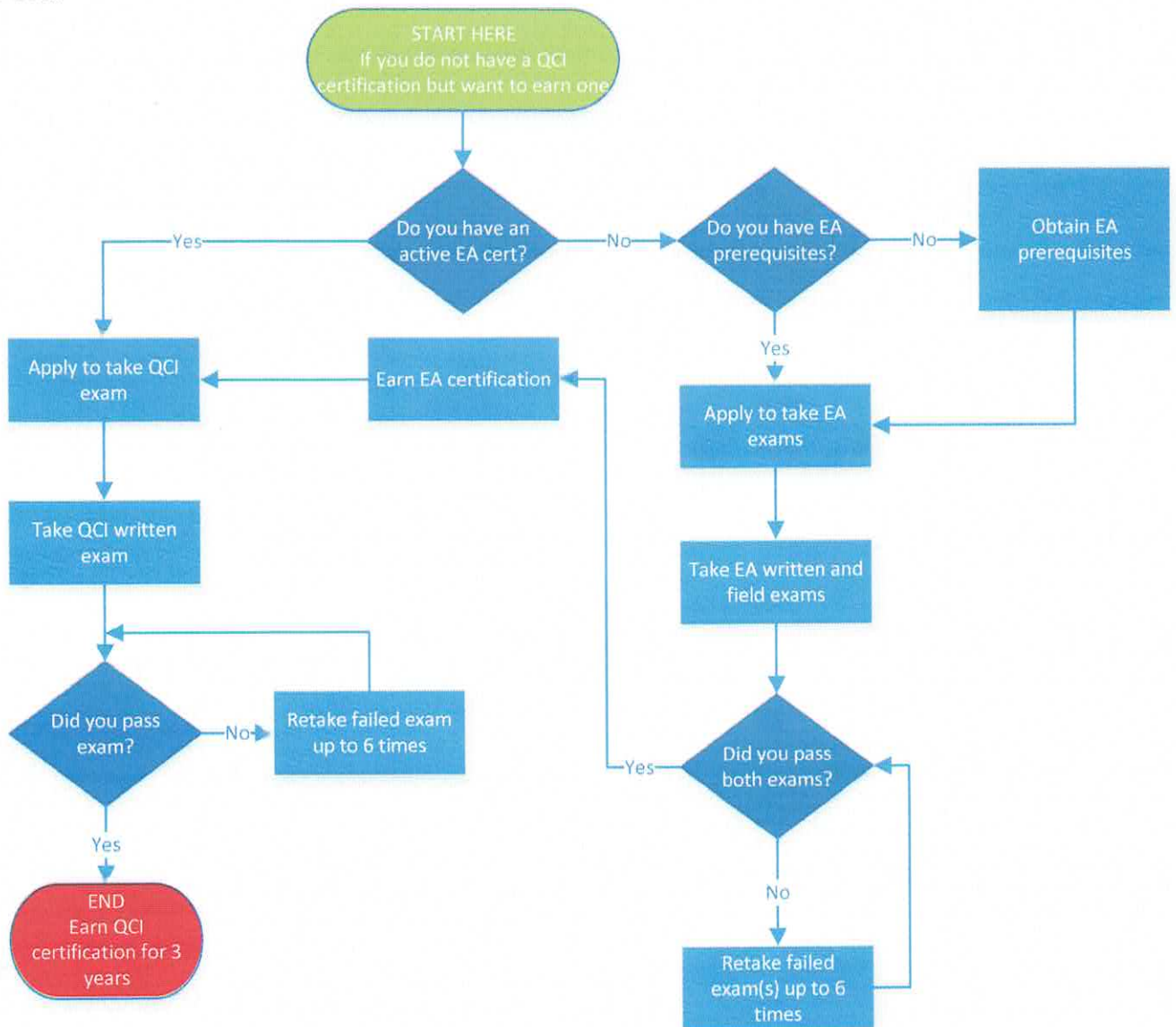
Meet EA prerequisites and pass EA field exam

HEP Quality Control Inspector: New Certification Candidates

When does this apply: March 1, 2019 and beyond

Flowchart Reference:

QCI-New-Final



QCI Prerequisite

Active EA certification